



DynaKing® Knuckle Boom Kingpost Crane is the **safest and most versatile** lifting and tubular handling crane available in today's market. This technology combines the rugged reliability of a kingpost crane with the handling stability of a knuckle boom crane. This unique kingpost design **eliminates any possibility of slew bearing failure or costly maintenance** associated with them.



DKC 1855 / 85-30	DKC 2455 / 125-30
Main Hoist Capacity 85mt @ 25m	Main Hoist Capacity 125mt @ 25m
Auxiliary Hoist Capacity 30mt	Auxiliary Hoist Capacity 30mt
Min-Max Boom Length 37.2-48.8m	Min-Max Boom Length 37.2-60.8m
Main Boom Length 25-30.5m	Main Boom Length 25-42.5m
Auxiliary Boom Length 12.2-18.3m	Auxiliary Boom Length 12.2-18.3m
KingPost OD 1,828.8mm	KingPost OD 2,438.4mm
Design Weight 140mt	Design Weight 156mt
API 2C 7th Edition: Type "E" KingPost Crane API, ABS & DNV Type Approval (Pending) ISO 4301/1 Lifting Appliance Classification Marine Applications: Drilling, Production & Vessel Prime Mover: Diesel or Electric DynaKing® reserves the right to adjust specifications without notice.	

SERIES DKC 1855 / 85-30

TECHNICAL SPECIFICATIONS

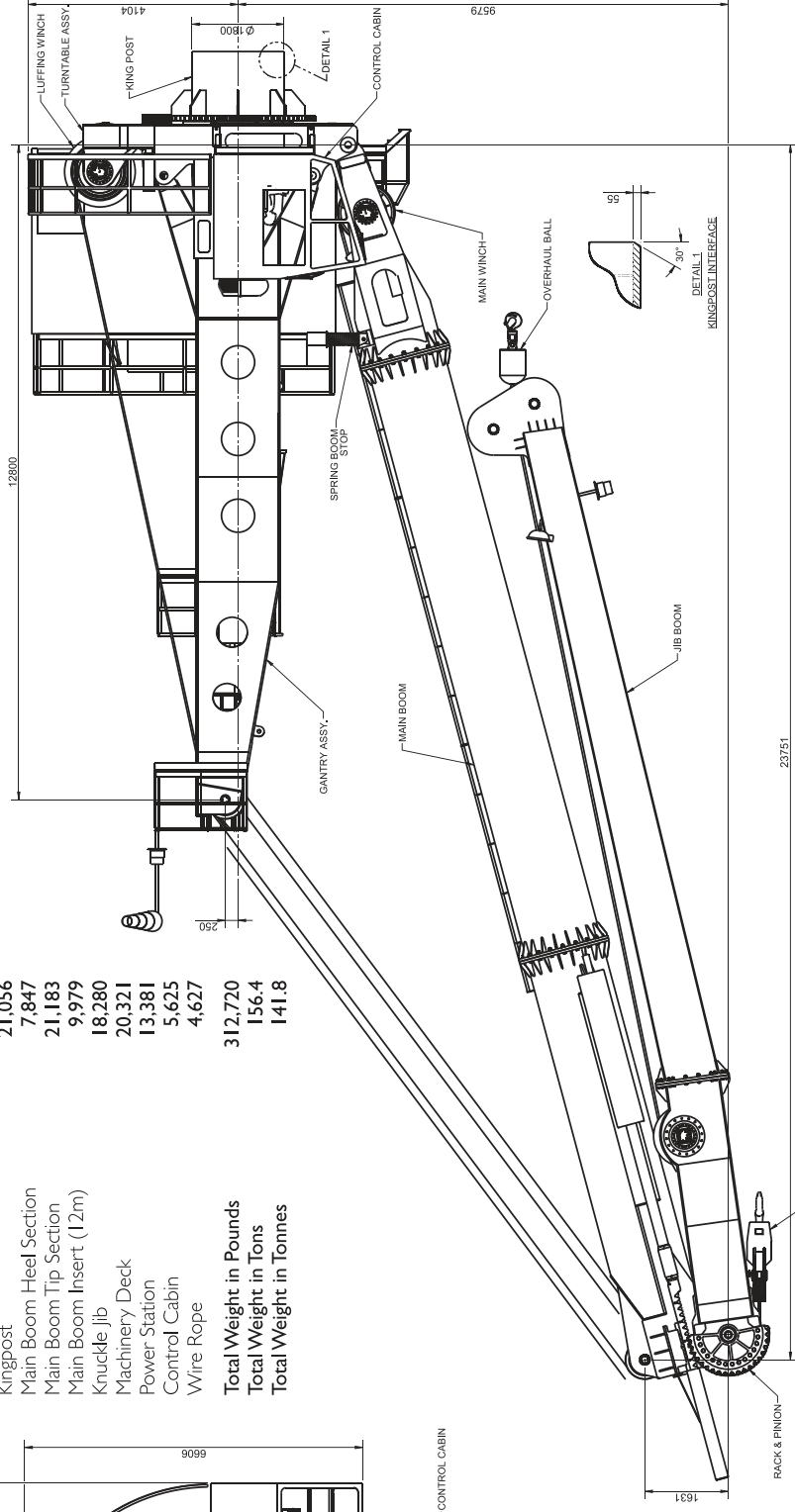
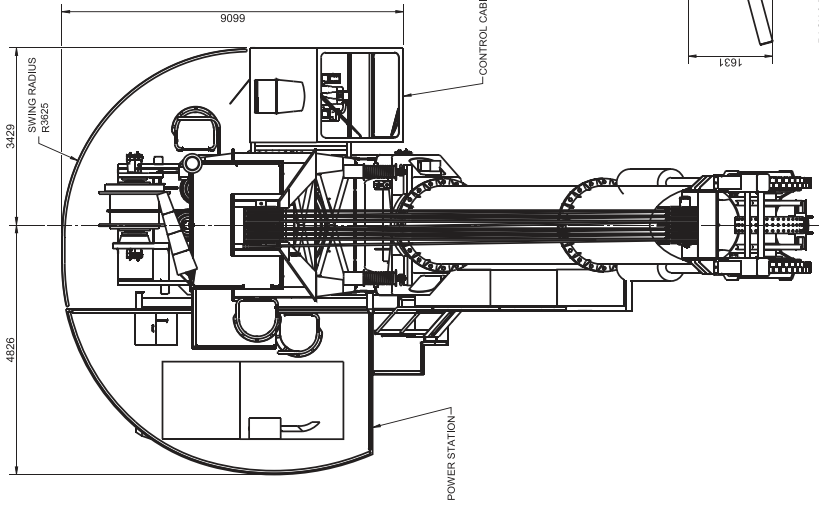
Maximum Overturning Mome **41,878 kN-m**
 Corresponding Thrust Load **2,500 kN**

Utilities Requirements

460VAC - 3 Ø - 60Hz - Electric Motor Driver
 220VAC - 1 Ø - 60Hz - Lighting & Accessories
 24VDC - UPS for Aircraft Warning Lights

	Kgs
Gantry	19,505
Kingpost	21,056
Main Boom Heel Section	7,847
Main Boom Tip Section	21,183
Main Boom Insert (12m)	9,979
Knuckle Jib	18,280
Machinery Deck	20,321
Power Station	13,381
Control Cabin	5,625
Wire Rope	4,627

Total Weight in Pounds **312,720**
 Total Weight in Tons **156.4**
 Total Weight in Tonnes **141.8**



NOTICE	
This drawing shall not be used or reproduced in any manner, for any purpose other than that for which it is released without the written consent of the officer of Dynaking.	
www.DynakingCranes.com	
UNLESS OTHERWISE SPECIFIED, ALL DIMENSIONS ARE IN MILLIMETERS	
• TOLERANCES UNLESS OTHERWISE SPECIFIED: LINEAR	
• REMOVE BURRS AND BREAK ALL SHARP EDGES	
• FINISHES UNLESS OTHERWISE SPECIFIED: MACH	
• UNLESS OTHERWISE SPECIFIED: MACH	
0 to 100	±0.25
100 to 300	±0.30
300 to 1000	±0.40
1000 to 3000	±0.50
3000 to 4000	±1.00
>4000	±1.50
ANGULAR	±0°30' ±0°45'

PROJECTION		DYNAKING®	
FIRST ANGLE		6552 Birmmoss Rd., Houston, TX 77041	
GENERAL ARRANGEMENT			
DATE	WEIGHT	DESIGNED BY	APPROVED BY
D	141,849 kg	JH	JM
DRAWING NUMBER		REVISED	
7/13/2011		SW-00106-GA-0001	
		0	